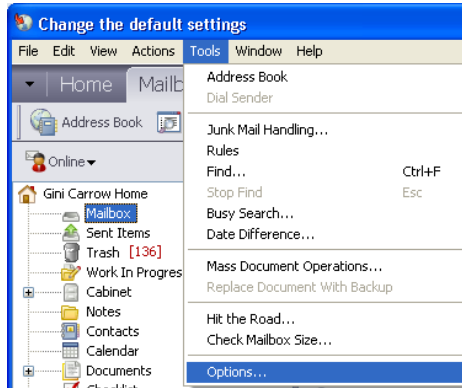


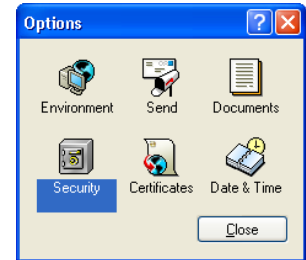
Novell GroupWise 7.0

To Change your GroupWise Password

Log into GroupWise as usual

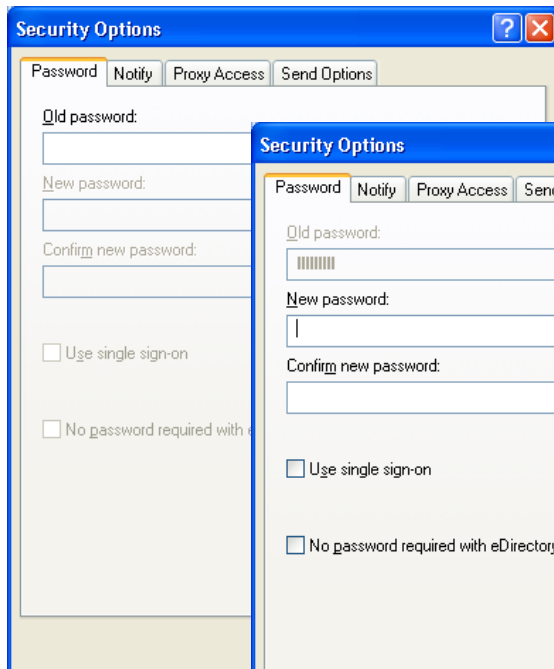


From the **Tools** menu, choose **Options**

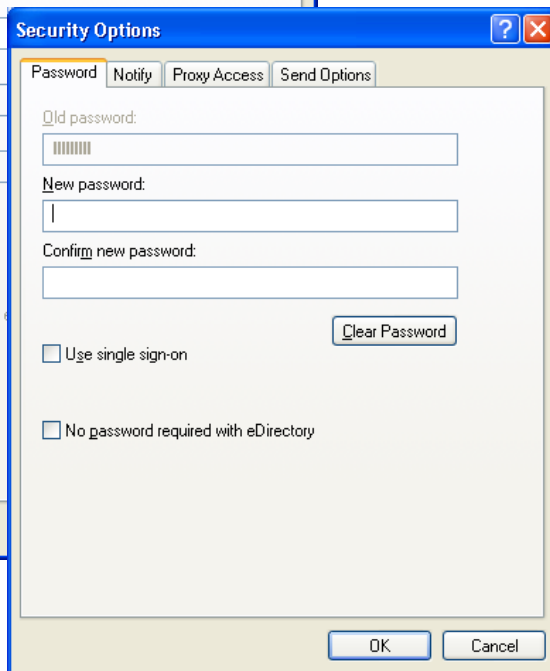


Double click the **Security** icon

Type in your **old password** and click **OK**



The New password field will become available



Type in the **New password** you want to use

Retype the new password to **Confirm**

Click **OK**

Next time you log into GroupWise, be sure to use the new password!